

FANS UK LIMITED



MORE THAN JUST

The most diverse range of industrial fans and accessories available from a single source

## SINGLE INLET CENTRIFUGAL

**Compact Dimensioned Centrifugal Fans**



External rotor motor  
Speed controllable

Available in AC or Electronically Commutated (EC)

1,100Pa max | 10,000m³/h

**High Pressure Centrifugal Fans**



Single inlet  
Standard motors

Suitable for filtration, forced draught or material handling applications,

17,000Pa max | 35,000m³/h max

**Medium Pressure Centrifugal Fans**

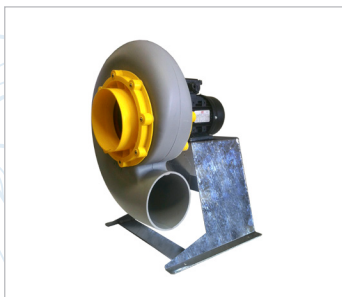


Robust metal construction  
Single or three phase

Suitable for operation up to 120°C as standard

3,000Pa max | 21,000m³/h max

**Plastic Centrifugal Fans**



Corrosion resistant  
Polypropylene construction

Medium pressure - Suitable for laboratory fume cupboard or process applications

2,000Pa max | 17,000m³/h max

**Industrial Backward Curved Blowers**



Standard motor  
Medium pressure & High temperature

Suitable for industrial applications including spraybooths

Size from Ø220 up to Ø1,000

3,200Pa | 75,000m³/h max

## BACKWARD CURVED CENTRIFUGAL

**Backward Curved Motorised Impellers**



External rotor motors  
Single & three phase, AC and EC

Suitable for most HVAC, filtration or electronic cooling applications

Size from Ø133 to Ø710

1,400Pa max | 17,500m³/h max

**Backward Curved Centrifugal Fan Modules**



External rotor motors  
Single & three phase, AC and EC

Suitable for most HVAC, filtration or electronic cooling applications

Size from Ø192 impeller up to Ø710

1,500Pa max | 17,500m³/h max

**ECFanGrid or Fan Wall**



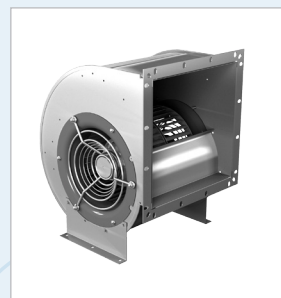
Multiple plug fans  
(fan modules) in parallel

Suitable for new or retrofit air handling unit projects, particularly where a large single fan is being replaced

Size from Ø192 impeller up to Ø710

## DOUBLE INLET CENTRIFUGAL

**Forward Curved Centrifugal Fans**

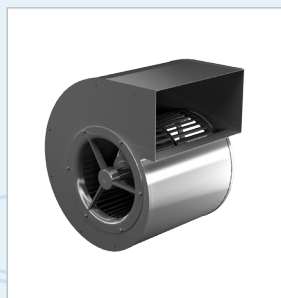


External rotor motors  
Single or three phase

High efficiency  
Suitable for general ventilation & Air conditioning applications

900Pa max | 13,000m³/h max

**Forward Curved Centrifugal Fans**

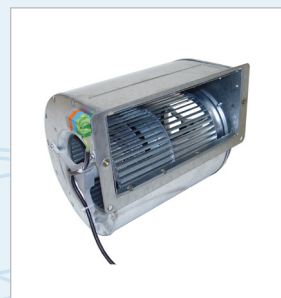


External rotor motors  
Single or three phase

High slippage characteristics  
Suitable for clean room & filtered applications

1,300Pa max | 12,000m³/h max

**EC Energy Efficient Blowers**



Electronically commutated  
External rotor motor

Integrated electronics - Options include alarm, speed sensor, constant volume/airflow

475Pa max | 9,560m³/h max

**Forward Curved Centrifugal Fans**



External rotor motor  
Single phase

Industry standard dimensions, Suitable for general ventilation & Air conditioning applications

700Pa max | 950m³/h max

**Low Pressure Centrifugal Fans**



Inch blowers  
AC or EC versions available

Industry standard dimensions, Suitable for general ventilation & Air conditioning applications

500Pa max | 7,250m³/h max

AXAIR  
FANS UK LIMITED

## AXIAL FANS

**Frame Axial Fans**

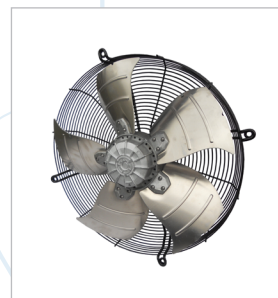


Industry standard compact fans, in AC, DC, EC or ATEX

Suitable for refrigeration or electronic cooling applications

270Pa max | 1,705m³/h max

**Sickle Blade Axial Fans**

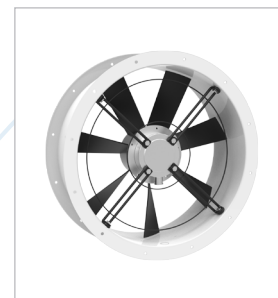


External rotor motors  
Single or three phase, AC or EC

Suitable for all HVAC applications

400Pa max | 33,000m³/h max

**Plate or Cased Industrial Axial Fans**



Standard motor up to IP65  
Single or three phase

Suitable for heavy industrial applications & building ventilation

1,800Pa max | 160,000m³/h max

**High Power Axial Fans**

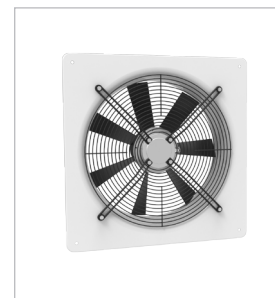


Variable number of blades  
ATEX variants

Suitable for HVAC applications that require high pressure

1,200Pa max | 85,000m³/h max

**High Efficiency Axial Fans**



External rotor motors  
Plate or guard mounted

Suitable for cooling & ventilating applications

300Pa max | 4,000m³/h max



## THERMAL MANAGEMENT & CONTROL PANELS

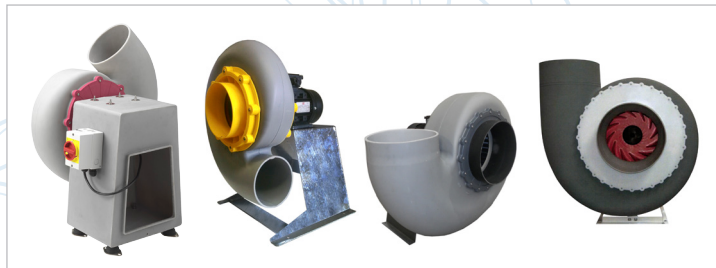
Axair fans range of thermal management accessories is specially designed for the electrical & electronic enclosure and control panel industry. It includes a vast choice of door mounted fan filter units IP54 or IP55, roof mounted fans, heaters, thermostats, lights and other accessories.



## CORROSIVE FUME FANS

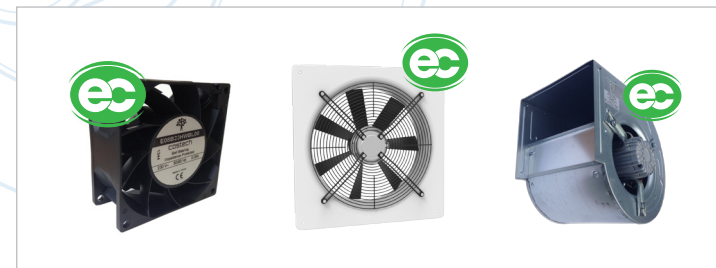
All polypropylene moulded construction fans, designed to extract and resist the widest range of corrosive chemical fumes in laboratory & industrial fume extraction.

A wide range of accessories are available including air speed controllers and alarms, ancillaries for complete installation.



## EC FANS & ENERGY EFFICIENT PRODUCTS

All our products are now available with either energy efficient AC motors (IE2 & IE3) or (electronically commutated) EC versions, including frame axial fans, external rotor motor fans, inch blowers, and industrial plate axial and centrifugal fans.



## ATEX FANS

ATEX compliant fans can be supplied in semi-conducting polypropylene, fabricated steel with copper or aluminium non-sparking components, cast aluminium or stainless steel.

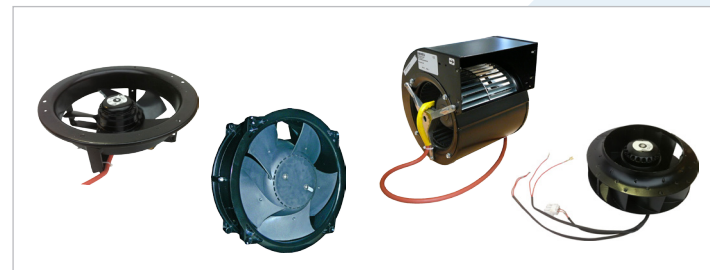
Available in centrifugal, axial or inline duct versions. Our range now extends to include our ATEX, EC and IP68 frame axial fan range.



## REFRIGERATION FANS

Electronically Commutated or standard AC selection of condenser & evaporator motors and fans for commercial refrigerators, refrigerated display cabinets and other applications.

EC versions with integrated electronic control, high efficiency, low noise, wide temperature range and IP55. Our compact frame fans now include ATEX, EC and IP68 in one unit.



## RAILWAY APPLICATIONS

Selection of fans and air movement products, particularly designed for rolling stock applications and manufactured to highest international railway standards (including fire protection, shock & vibration, electrical & electronic motor protection).

## HOT GAS & HIGH TEMPERATURE

Designed to handle high temperature from 100°C up to 300°C. Available in a wide range of sizes and configurations including axial and centrifugal. Versions with motors located outside the airstream or fitted with temperature resistant windings.



## SMOKE FANS

Axair can offer a complete design service and a full range of fans for emergency smoke extract, escape route pressurisation and car park ventilation.

Induction type jetfans, smoke extract for industrial & commercial buildings, pressurisation kits for smoke control in escape routes.



## MILITARY & AEROSPACE APPLICATIONS

Typical applications also include special commercial fields where shock, vibration, high & low temperatures, humidity and salt spray require special construction.

AC & DC axial fans, 400Hz military spec fans, AC or DC high performance.



## COMMERCIAL FANS

A large selection of roof fans, inline duct fans and kitchen extraction fitted with backward curved motorised impellers. All fitted with either external rotor motors or standard industrial motors. All available with EC motors.





## CONTROLLERS



Transformer speed controllers and electronic voltage controllers (phase angle) for external rotor motors and a selection of standard industrial motors.



Electronic Variable Speed drives specifically designed for most types of standard industrial motors, used for speed control and energy savings. Controllability features available include manual, temperature, humidity, CO<sub>2</sub> or pressure.



Fume cupboard controllers with either basic air speed monitoring and alarm feature, or with additional air speed controllability when used in conjunction with inverter drives or electronic dampers.



Smaller, simplified monitor with basic alarm system especially designed for light duty operation.

## ACCESSORIES



Axair offers a comprehensive range of accessories for all products, including thermal management accessories for control panels (Covers, door switches, etc.) fittings for corrosive fume fan installations (both indoor and outdoor), ancillaries for ducted

applications (brackets, clamps, adaptors, louvers), inlet rings for motorised impellers, finger guards (inlet or outlet) for all fans and electrical components (isolators, starters & capacitors).



**AXAIR IS AN  
INDEPENDENT  
INDUSTRIAL FAN  
MANUFACTURER AND  
DISTRIBUTOR.**

Established in 1992, Axair Fans UK Limited is a fully independent distributor and manufacturer of fans & motors.

Axair is the exclusive representative for manufacturers Ecofit and SEAT of France, Fandis and Costech of Italy, Casals of Spain, Rosenberg of Germany and Wellington of New Zealand. As a result of our long standing relationship with each of our principals, we are able to advise on all fan selections and deal with the most complex of technical issues.

Axair has developed unique market experience which allows us to specify the right fan for any industrial application, from hazardous fume extract to refrigeration, from electronic cooling to railway applications.

Axair Fans operates from a 12,000ft<sup>2</sup> high bay warehouse containing standard and non-standard references, component parts and accessories allowing us to manufacture and assemble standard or special air movement products (including ATEX) from stock.

We receive deliveries from our suppliers on a weekly basis, which guarantees a fast & efficient service for our wide range of customers including OEM's, contractors, distributors and repairers.

Our team of internal and external specialist sales engineers are at your disposal to discuss your enquiry and help you to specify the right fan, whether you are a consultant, design engineer, purchasing manager or sole trader.





[WWW.AXAIR-FANS.CO.UK](http://WWW.AXAIR-FANS.CO.UK)



Lowfield Drive  
Centre 500  
Wolstanton  
Newcastle-Under-Lyme  
ST5 0UU



01782 349430



01782 349439



[sales@axair-fans.co.uk](mailto:sales@axair-fans.co.uk)

