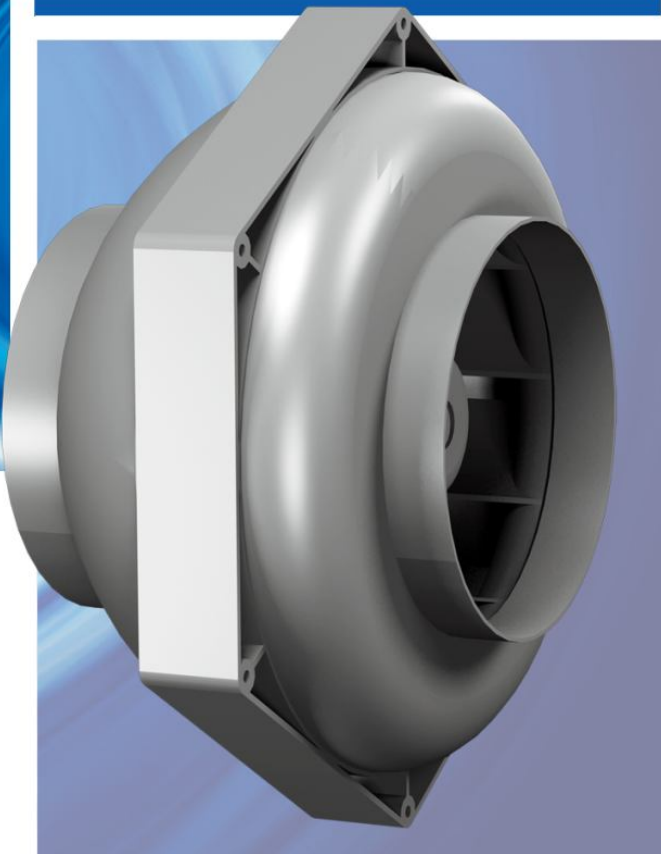


Plastic
Casing

In-line duct Fans



2011 Edition

AXAIR
FANS UK LIMITED
www.axair-fans.co.uk

General description

The 'RS' range of Inline duct fans are fitted with an attractive and resilient plastic casing with an integrated IP44 terminal box and guide vanes. The 'RS' range are powered by external rotor motor based fans which are 100% speed controllable. Impellers up to Ø250 are made of plastic, the RS315/L being fitted with metal impellers.

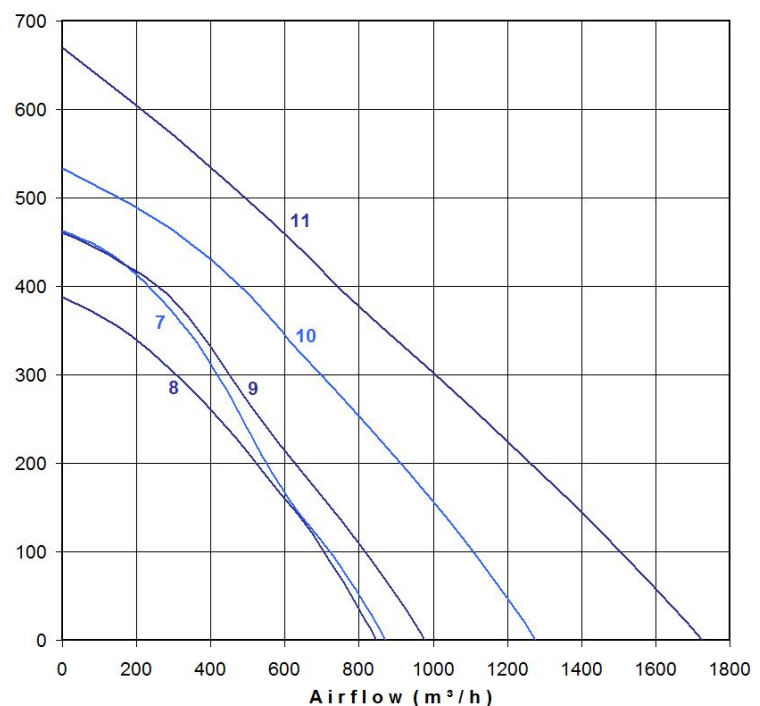
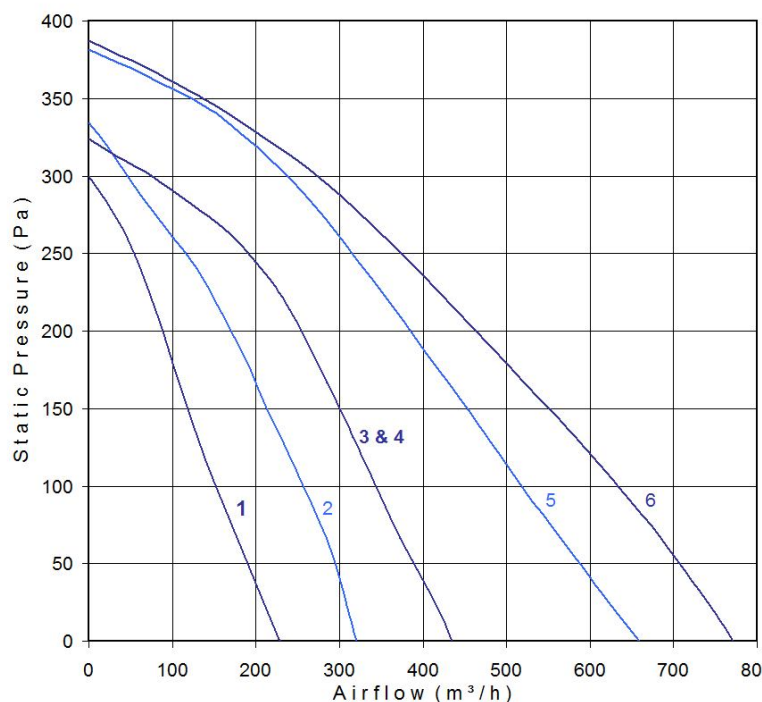
- Resilient plastic housing
- Standard metric spigot
- Integral Terminal box
- Manufactured to ISO 9001
- G2.5 precision balanced impeller
- High efficiency impeller
- Thermally protected motor
- IP44 ingress protection motor
- Class F insulated motor
- Electronic control compatible

Technical data

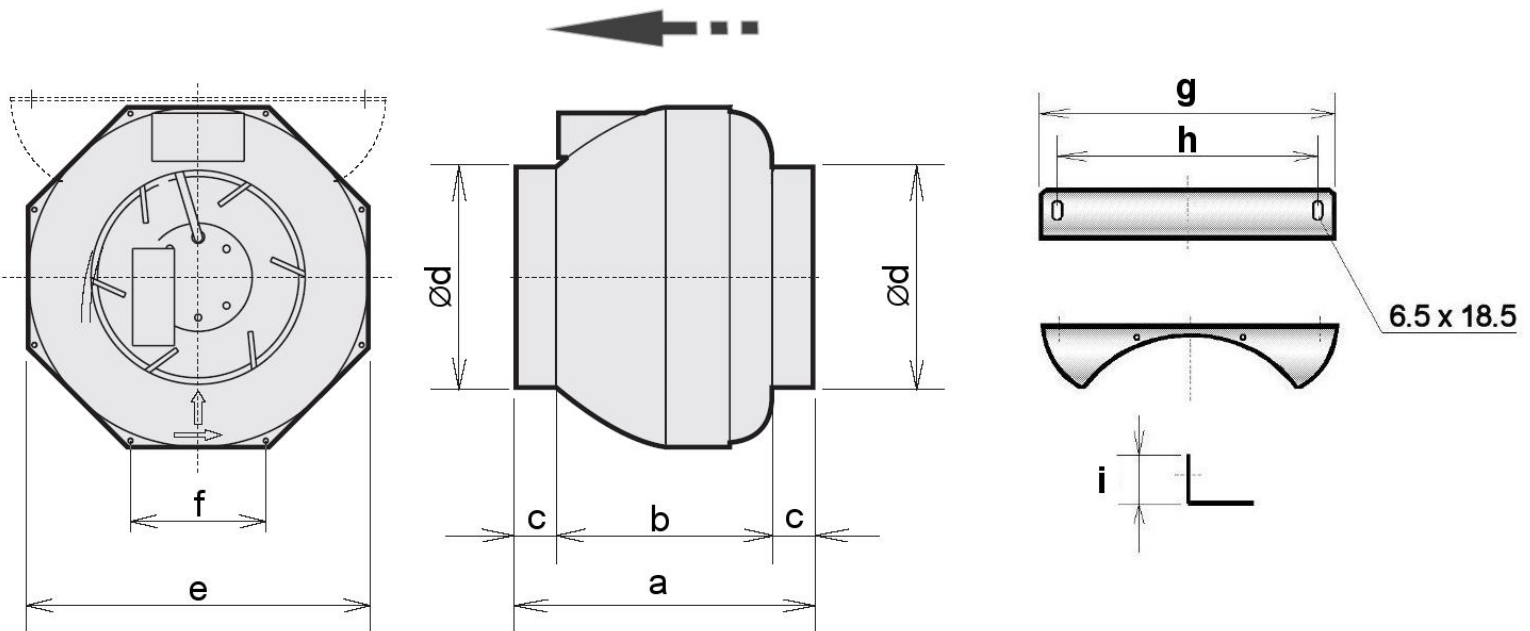
230Volts 50Hz

Code	Maximum Airflow m ³ /h	Power Wa	Max Current A	Speed rpm	Max. Air temp. °C	Weight Kg	Curve
RS 100 L	230	40	0.18	2030	60	2.4	1
RS 125 L	335	66	0.31	2415	70	2.4	2
RS 150	440	63	0.29	2445	70	3.0	3
RS 160	440	64	0.29	2490	70	3.0	4
RS 160 L	660	105	0.46	2530	50	3.2	5
RS 200	780	105	0.46	2535	50	3.4	6
RS 200 L	870	135	0.59	2515	55	3.7	7
RS 250	850	98	0.43	2635	50	3.4	8
RS 250 L	980	126	0.55	2575	55	3.7	9
RS 315	1275	177	0.77	2655	55	5.7	10
RS 315 L	1725	236	1.03	2585	45	5.5	11

Airflow Characteristics



Dimensions (mm)



	RS 100 L	RS 125 L	RS 150	RS 160 / L	RS 200 / L	RS 250 / L	RS 315 / L
a	220	220	230	230	230	230	275
b	160	160	170	170	170	170	215
c	30	30	30	30	30	30	30
d	100	124	149	159	199	249	314
e	245	245	340.5	340.5	340.5	340.5	405
f	97.6	97.5	135.7	135.7	135.7	135.7	160.7
g	270	270	270	270	270	270	405
h	240	240	240	240	240	240	375
i	47	47	47	47	47	47	47
Bracket ref.	MB 1	MB 1	MB 2	MB 2	MB 2	MB 2	MB 3

Noise Levels

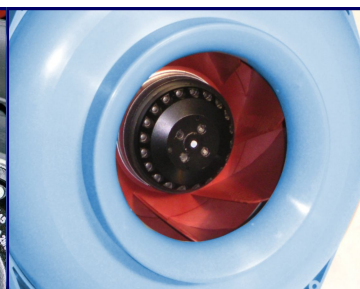
Sound Pressure [dB(A)]	RS100L	RS125L	RS150	RS160	RS160L	RS200	RS200L	RS250	RS250L	RS315	RS315L
LWA₂ [dB(A)] Casing	51	51	49	49	55	52	57	51	55	54	57
LWA₅ [dB(A)] Inlet side	62	63	61	61	68	66	70	65	68	70	70
LWA₆ [dB(A)] Outlet	60	61	57	57	66	65	68	64	67	71	70



Air guide vanes : Straighten the air to reduce noise turbulences



High efficiency impellers : Profiled blades for high airflow, low noise & low running costs



Painted rotor : To resist corrosion



Integrated connection box : Particle & splashed water protection to IP44



Mounting bracket



Back draught damper



Fast clamp



Gravity Louver Shutter



Transformer Speed Controller



Filter Box



Flexible ducting



Electrical Isolator



Electronic Speed Regulator



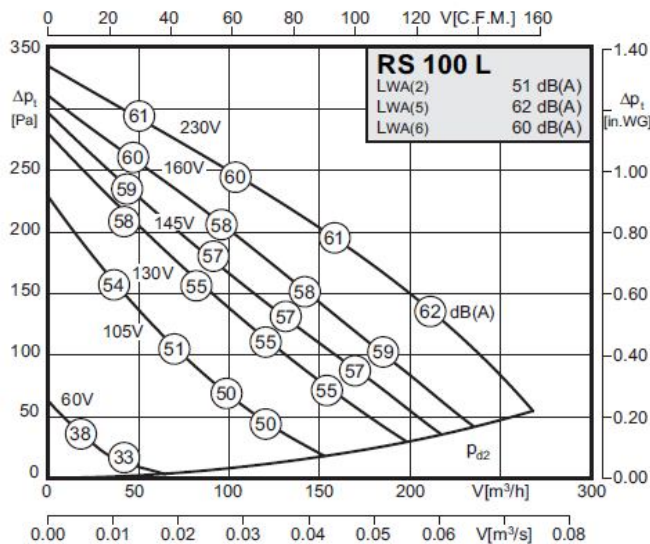
Spigot guard

FEATURE :

Speed Control

All our RS fans are 100% speed controllable - Please contact us for the individual datasheet of your selection and check the airflow & noise spectrum at various volt-ages.

We can provide an individual datasheet containing information, such as example here below :



Type : RS 100 L		Art.-No. : F00-10060	
U	230V (50Hz)	$\Delta p_{fa \min}$	- Pa
P ₁	0,065 kW	ΔI	- %
I _N	0.3 A	I _A / I _N	1.5
n	2480 min ⁻¹		IP44
C _{400V}	2 μ F		01.009
tr	70 °C		2.4 kg

Sound levels:

LWArel A-weighted at V=0,5*V _{max}	fM [Hz]						
	125	250	500	1K	2K	4K	8K
LWA2 [dB(A)] casing	33	42	44	47	44	38	27
LWA5 [dB(A)] inlet side	43	54	57	56	54	51	41
LWA6 [dB(A)] outlet side	42	53	54	54	53	49	40

AXAIR FANS UK Ltd

Lowfield Drive - Centre 500 - Wolstanton - Newcastle-under-Lyme - ST5 0UU
 Tel : 01782 349430 - Fax : 01782 349439

sales@axair-fans.co.uk

Visit our website : www.axair-fans.co.uk